

MULTIPLE DIAMETERS

Available in lengths from 1.0m to 8.0m to suit any application. All insertion tubes feature our patented EasyGlide, 4-layer Tungsten sheathing for smooth entry and exit, and are IP 67 rated for rugged durability.

INDUSTRY-FIRST MINI-JOYSTICKS

The VJ-4 user interface is designed to enable maximum functionality with minimal effort. Use the mini-joysticks OR touchscreen to navigate all menus and adjust all settings. No feature-rich borescope is easier or more intuitive to use.

CUSTOM OPTIONS TO FIT EVERY APPLICATION

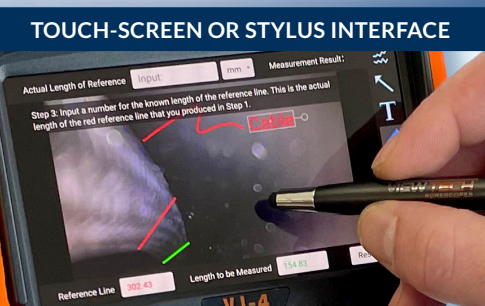
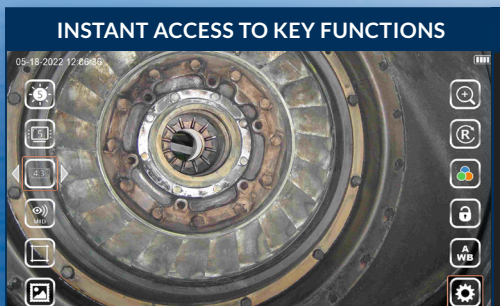
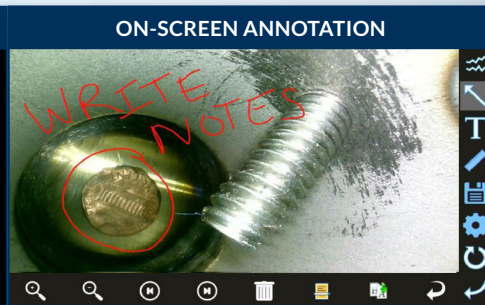
With a variety of diameters and lengths available, along with focal length and illumination options, you can have a borescope perfectly tailored to your specific inspection requirements.

UNRIVALED SERVICE AND EXPERTISE

The VJ-4 is brought to you by the same team of borescope experts that changed the industry 15 years ago with the world's first mechanically articulating, joystick-controlled video borescope. Find out why we are the #1 seller of borescopes in the US.



RUGGEDIZED CASE & ACCESSORIES INCLUDED WITH EVERY BORESCOPE WE SELL



INSERTION TUBE	Outer Diameter	3.9mm	
	Length	1.5m, 2.0m or 3.0m	
	Exterior Material	Tungsten EasyGlide, crush-resistant	
	Chemical Compatibility	Water, machine oil, heating oil, diesel, 3.5% saline concentrate	
	Articulation Range	360° around, 170±10° backward (1.5m) 150±10° backward (2.0m) 120±10° backward (3.0m)	
OPTICS	Angle of View	100°	
	Depth of Field	8.0mm–100.0mm	
	Effective Pixels	921,600 pixels	
	Illumination Method	6 Super high-intensity white LEDs	
	Illumination Output	≤ 10,000lux	
BASE UNIT	Display Monitor	5.5" OLED touch screen	
	Articulation Control	Thumb-actuated, mechanical rocker	
	Joystick Lock	Automatic	
	Brightness Control	10-step LED brightness adjustment	
	Control Buttons	Two multi-function mini joysticks and left/right buttons	
	Playback	Photos, videos (w/wo audio), thumbnail view	
	Audio / Microphone	3.5mm port	
	Removable Storage	All media captured on removable SD Card. Base Unit has no internal media storage capabilities.	
	Data I/O ports	SD card, HDMI, USB Type C	
	Battery	Two 18650B PCB-Protected Li-ion batteries (rechargeable)	
	Operating Method	One handed, portable	
	Dimensions	13.6" x 6.2" x 7.3"	
	Weight	2.09 lbs. / .95 kg	
	MENU FUNCTIONS & OPTIONS	User Interface	Pop-up menu operation, menu navigation, touchscreen
File Management		Photo and video recording, playback, thumbnail preview, delete	
Image Control		Image freeze, image flip, zoom in/out	
Image Format		BMP, PNG or JPG	
Video Format		AVI or MP4	
Language		English, French, Spanish	
OPERATING LIMITS	Run Time	≤ 3 Hours	
	Operating Temp. Base Unit	-20 – 50°C, -4 – 122°F	
	Operating Temp. Insertion Tube	-20 – 70°C, -4 – 158°F	
	IP Rating, Insertion Tube	IP67	